

# The Common People

If you were to walk past Charlie Cake Park today, you would notice that it looks incredibly different to how it has in the recent past. For several weeks during February and March the charity, Groundwork worked on improving the appearance of the park.

## Investment in Common Land

First up on their list of improvements was the pruning of the bushes. This gave the park a much tidier appearance. Following this, the beds were turned over and covered with mulch. After this preparation, over 400 plants were planted.

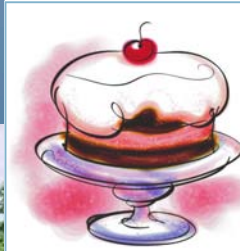
Before, in 2005.



## Contents

Improvements.....	Pg 1
An Historical Perspective.....	Pg 2
Current News.....	Pg 3
Contact Details.....	Pg 4

One of the most striking differences is the creation of 3 new flower beds in the centre of the grassed area. Groundwork's landscape architect had studied archive photographs of the land and recreated the rose beds which were formerly there.



**Urban Picnic planned for 16th June.** Let's celebrate the common land by eating cake in Charlie Cake Park!

## Interested in being our Friend?

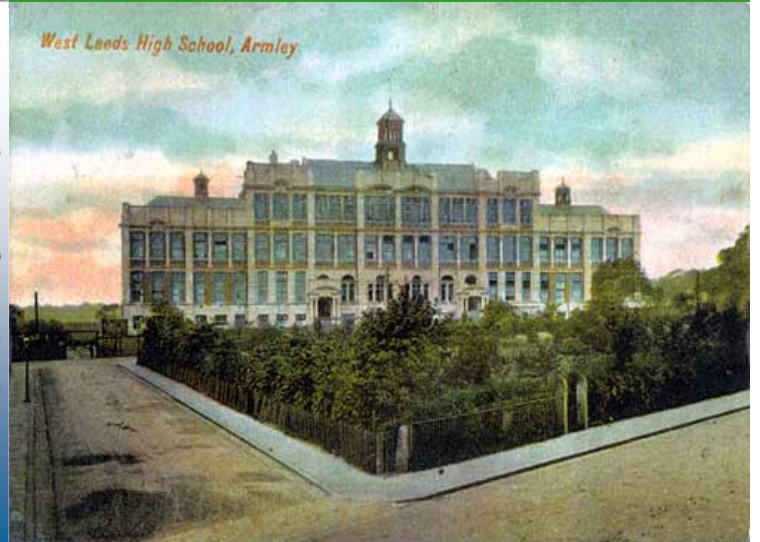
There is no limit to the numbers of Friends the Trust has. The only requirement is that you are committed to preserving the green space we are lucky enough to have.

# Way Back When...



It is impossible not to like a park with such an eccentric name as Charlie Cake Park. It just lends itself to endless speculation about who Charlie Cake was, if there was such a person; what he did and how come a park became named after him.

The undated photograph above shows the park as a formal garden. The pavilion was used as a venue for men to play dominoes and there were signs to "Keep off the grass". In 1907 the West Leeds Boys School was completed and this postcard shows what it, and the park would have looked like before the trees grew!



## Charlie Cake Park

The official name for this piece of land is Whingate Park but Charlie Cake Park became a more well known name due to a Pudsey baker, Charlie Cake. Legend would have it that he would rest at the park whilst making the arduous trek towards Pudsey and Bramley. His trusty steed would be tethered whilst Charlie perhaps peddled his wares. An Armley culinary speciality developed due to good ol' Charlie. His most well known cake was a "spicy shortbread". They cost 1d each and if you were to buy a dozen, you were given an extra one free. Charlie Cake Park retains celebrity status having featured in Barbara Taylor Bradford's *A Woman of Substance*; *A Touch of Frost* (well—the urinal, anyway) and a Mekons track named Charlie Cake Park.

## Friends of Armley Common Right Trust

### Famous Landmark Bites The Dust

As many of you will have noticed, during the Autumn we saw the sad demise of the Charlie Cake Hut/Shed/Pavilion. One Monday evening in October saw high levels of drama in the surrounding streets as the area was filled with smoke, firemen and neighbours. By the time the fire was noticed it had caused a large amount of damage to the internal walls of the building. It took some time for the flames to be put under control and thick smoke was billowing everywhere as the roof tarpaulin had set alight.

A decision was quickly made that the shed would need to be brought down. The following weekend, a team of hardy Trustees and Friends of ACRT set to the task of laying the shed to rest. Every cloud has a silver lining though, as the remains made for an excellent bonfire that evening.



Going.....

Going.....

Gone.

### What Next?

Plans have been drawn up for another hut to be built to replace the old one. If approved, the new hut will be situated opposite the School Lofts and have a small kitchenette and disabled access toilet.



### Daleks in the Park?

The appearance of strange new compost bins is not something to do with Dr Who, these new tenants of the park are for composting. Anyone can put uncooked vegetable waste and fruit in the bins and the worms and microbes break them back down to soil. Composting saves energy transporting waste and prevents greenhouse gases when the waste is tipped. There are now 2 bins in Charlie Cake Park and one in Moor Top



# Current

# Information

Iris Cole is a remarkable woman. Having become a Trustee in 1976, she is one of the longest serving current Trustees. During 1976, Iris was involved in setting up, and chairing, the Armley Historical Society. The aim of this group was to preserve the rich heritage in Armley through campaigning for the preservation of the historical buildings. It's thanks to Iris that Weavers Court was not demolished, as had been planned. When Iris joined ACRT, there were 3 Councillors on the Board of Trustees, one from each political party. Two sponsors had to support your application to be a Trustee and Iris became a Trustee because of her involvement in the Historical Society. Iris has extensive knowledge of the history of the Trust and Armley in general and she would love to pass on what she knows to new Trustees or friends.

In the 1970's becoming a Trustee was very popular. Unfortunately, in recent years it has been more difficult for the Trust to recruit new Trustees. Importantly, they need some young people to continue the preservation of our heritage. If you are interested, please contact Brooke or David (see below).

### Further Information

If you would like to know more about Armley Commons Rights Trust, please contact Brooke Nelson or David Boutle (2634561).

If you want to know more about the Friends of Armley Common Rights Trust or wish to submit an article for the next newsletter (Spring 2007) please contact:

Jane Scroggie  
c/o West Leeds Healthy Living Network  
Unit 4  
Armley Park Court  
Stanningly Road  
Leeds  
LS12 2AE



#### Acknowledgements

The Editor would like to thank the following people for their help with the production of this publication.

Iris Cole (Trustee)

Chris Coates (West Leeds Healthy Living Network)

Leeds Library and Information services (for the use of the pictures of Charlie Cake Park)